

---

# IISADMPWD Replacement Tool v1.1 Installation and Configuration Guide

---

Instructions to Install and  
Configure IISADMPWD  
Replacement Tool v1.1

---

Web Active Directory, LLC

---

# IISADMPWD Replacement Tool v1.1 Installation and Configuration Guide

---

## Contents

- Overview ..... 2
- Installation Support..... 2
- System Requirements ..... 2
- Installation Instructions ..... 3
  - Installation Procedure..... 3
- Quick Start Guide ..... 7
  - Run the Check Password Status Web Application ..... 7
  - Run the Change Password Web Application..... 7
- IISADMPWD Replacement Tool Administration ..... 7
  - Helpful Videos ..... 7
  - Best Practices for Implementation ..... 7
  - Securing the Admin Page ..... 7

# IISADMPWD Replacement Tool v1.1 Installation and Configuration Guide

---

## Overview

These configuration notes provide direction on installing and configuring IISADMPWD Replacement Tool for your environment. The WebAD IISADMPWD Replacement Tool replaces the original IISADMPWD ASP application available from Microsoft® for versions of IIS before IIS 7 and Windows Server 2008. Make sure you meet the system requirements before you install the solution and you can get more information about IISADMPWD Replacement Tool at <http://www.webactivedirectory.com/products/iisadmpwd/>.

## Installation Support

Get support for Web Active Directory solutions at <http://support.webactivedirectory.com/> if you need assistance with issues that arise while installing or configuring IISADMPWD Replacement Tool. You can also reference videos for help with the product on the Web Active Directory site at <http://webactivedirectory.com/products/iisadmpwd/videos>.

## System Requirements

Please note the important system requirements detailed below before installing IISADMPWD Replacement Tool. You can install pre-requisites using the Microsoft Web Platform Installer at <http://www.microsoft.com/web/downloads/platform.aspx>. You can also install each component individually using the links below if you do not want to use the Web Platform Installer.

Requirement	Description
<b>Windows Server 2008 or 2008 R2</b>	Web, Standard, Enterprise or Datacenter Edition: Hosts IISADMPWD Replacement Tool applications.  <b>Important Note</b> Please ensure the server is not a domain controller and is only a member server in the domain.
<b>Microsoft .NET Framework version 4.0</b>	Runs .NET applications. You can download .NET 4.0 from Microsoft's download site at <a href="http://www.microsoft.com/download/en/details.aspx?id=17851">http://www.microsoft.com/download/en/details.aspx?id=17851</a> .
<b>ASP.NET MVC 3 Tools</b>	Runs MVC web applications like IISADMPWD Replacement Tool. You can download the tools at <a href="http://www.microsoft.com/download/en/details.aspx?displaylang=en&amp;id=1491">http://www.microsoft.com/download/en/details.aspx?displaylang=en&amp;id=1491</a> .

# IISADMPWD Replacement Tool v1.1

## Installation and Configuration Guide

---

<b>Windows service account with permissions to change passwords in Active Directory</b>	Used by IISADMPWD Replacement Tool to change passwords in Active Directory.  <b>Important Note</b> Your service account must have privileges to change passwords in Active Directory. Refer to Procedure 2 of the support article at <a href="https://getsatisfaction.com/web_active_directory/topics/what_permissions_does_a_service_account_need_to_reset_and_change_ad_passwords_and_to_unlock_ad_accounts">https://getsatisfaction.com/web_active_directory/topics/what_permissions_does_a_service_account_need_to_reset_and_change_ad_passwords_and_to_unlock_ad_accounts</a> for assistance configuring these permissions.
<b>7 MB disk space</b>	Stores physical files used to run IISADMPWD Replacement Tool

### Installation Instructions

This section includes installation instructions for new installations of IISADMPWD Replacement Tool.

#### Installation Procedure

The IISADMPWD Replacement Tool installer includes two web applications. The default installation directory is %Program Files%\WebActiveDirectory\IISADMPWD\_ReplacementTool.

The IISADMPWD Replacement Tool installer contains everything you need to run IISADMPWD Replacement Tool. Refer to the System Requirements section on page 2 for more information about prerequisites. The installation takes less than two minutes and leaves you with a clean IISADMPWD Replacement Tool installation that is ready for you to use in your environment after a little configuration.

#### NOTE

---

When installing applications on Windows Server 2008, ***you must run the installer as an administrator*** or the installation will not complete all the setup tasks. Even if you are logged in to the installation server as an administrator, the operating system will not run the installation under the administrator account's privileged security context unless you explicitly run it this way. Ensure you right-click the WebAD\_IISADMPWD\_ReplacementToolSetup.exe file and choose ***Run as administrator*** to install IISADMPWD Replacement Tool under an administrative security context.

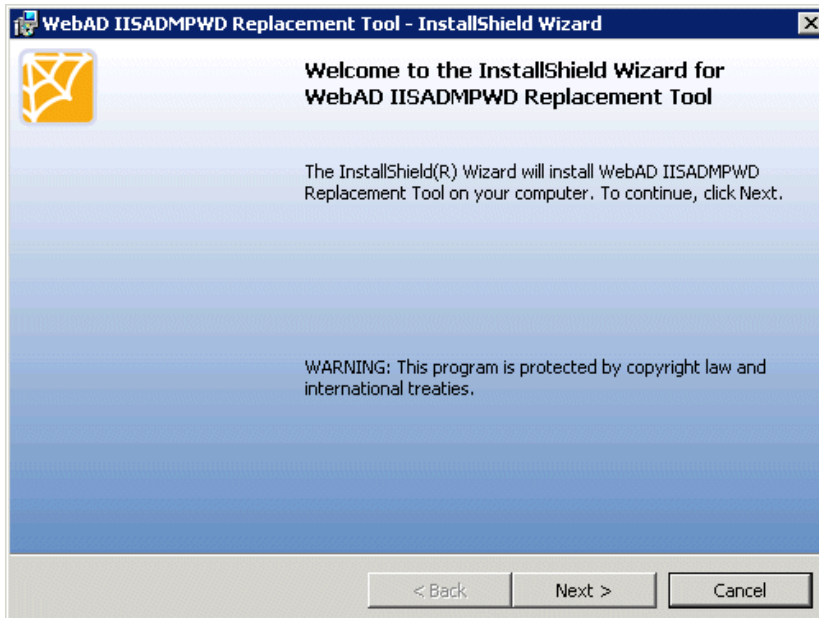
---

1. Unzip the contents of the zip file you downloaded from the Web Active Directory download site to a location on your local installation system.
2. Read the important installation notes contained in the installation guide included with the download package.
3. To begin the installation, run the WebAD\_IISADMPWD\_ReplacementToolSetup.exe file that you extracted from the zip file.

# IISADMPWD Replacement Tool v1.1 Installation and Configuration Guide

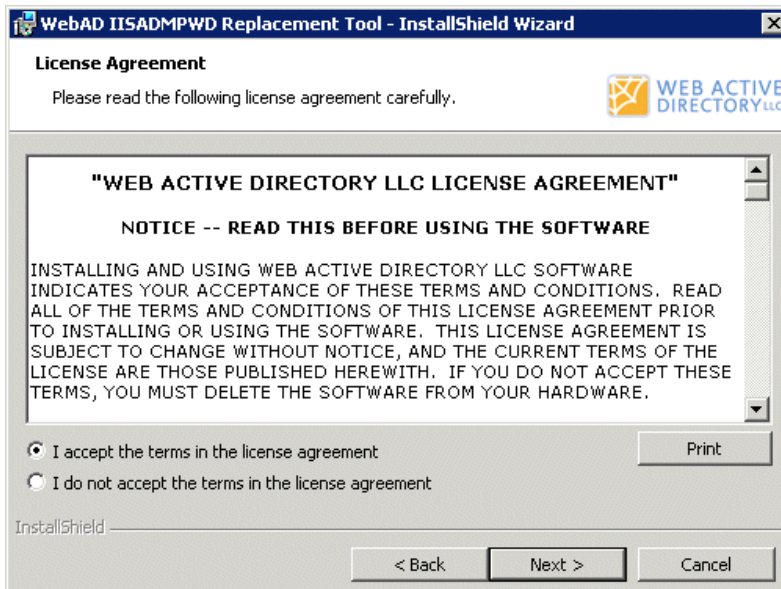
---

4. The installer begins and displays the IISADMPWD Replacement Tool Installer Welcome Page.



Click Next to continue.

5. Review the license agreement and accept the terms after you review them.

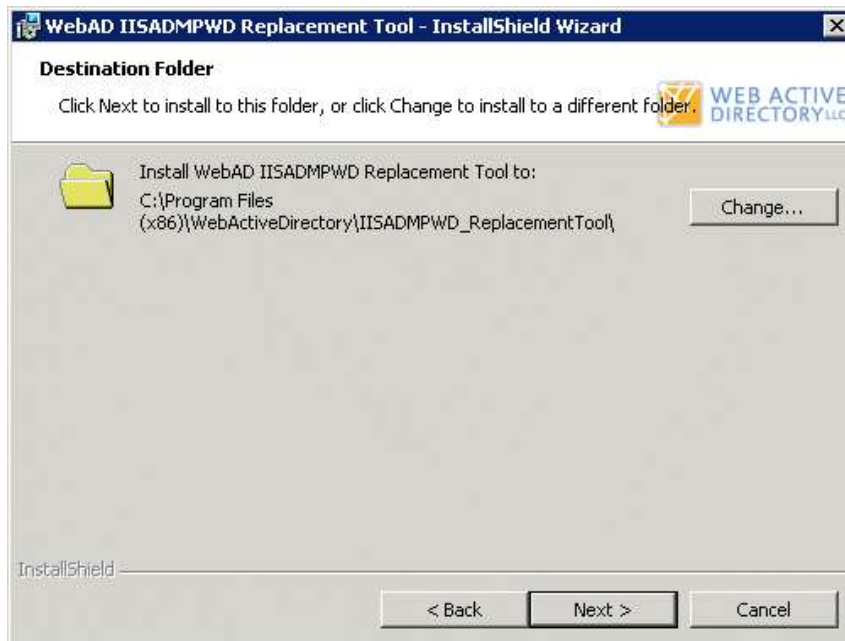


Click Next to continue.

# IISADMPWD Replacement Tool v1.1 Installation and Configuration Guide

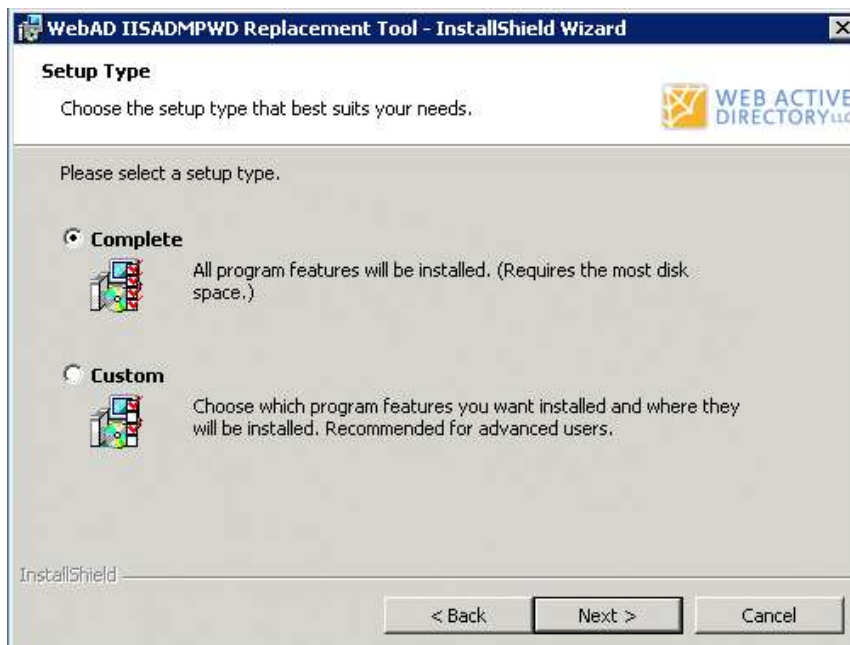
---

6. Choose a directory where you want to install the solution.



Click Next to continue.

7. Choose the setup type. The Complete option installs both web applications and you can choose to install only one web application by choosing the Custom option.

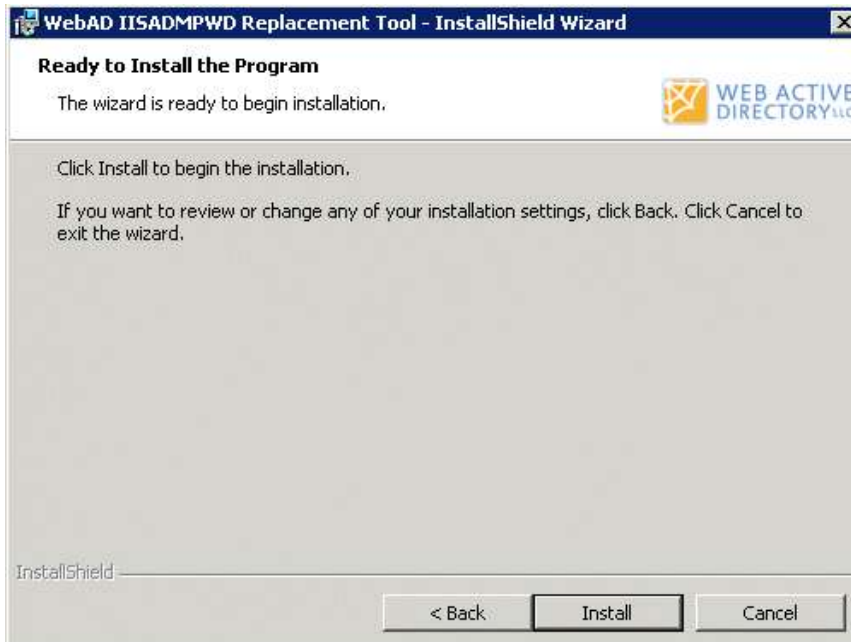


Click Next to continue.

# IISADMPWD Replacement Tool v1.1 Installation and Configuration Guide

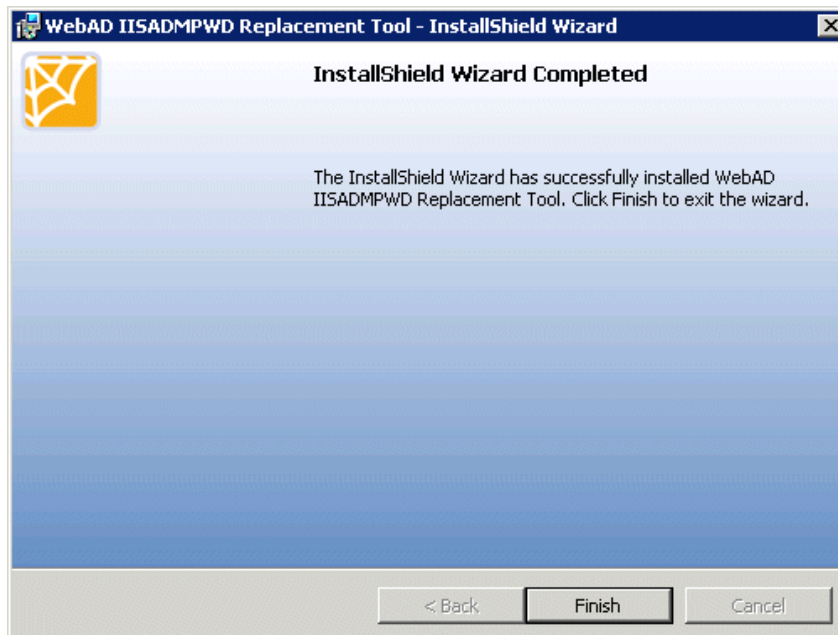
---

8. You have entered all the information necessary to install IISADMPWD Replacement Tool on your system.



Click Next to install IISADMPWD Replacement Tool.

9. The installer installs the components you need to run IISADMPWD Replacement Tool. You will see the Completed Page once the installation completes.



Click Finish to close the installer.

# IISADMPWD Replacement Tool v1.1 Installation and Configuration Guide

---

10. You are now ready to run IISADMPWD Replacement Tool. Check out the Quick Start Guide section to customize your configuration settings for your environment.

## Quick Start Guide

Once you complete installation of IISADMPWD Replacement Tool, you can run it on the local server through the Program Files > Web Active Directory IISADMPWD Replacement Tool menu. You can also go directly to the web applications using your browser on ports 8501 and 8502.

### Run the Check Password Status Web Application

Point a browser to <http://<YourServerName>:8501/> to run the Check Password Status application. You can go to the /Admin page for the application to configure application settings.

### Run the Change Password Web Application

Point a browser to <http://<YourServerName>:8502/> to run the Change Password application. You can go to the /Admin page for the application to configure application settings.

## IISADMPWD Replacement Tool Administration

The IISADMPWD Replacement Tool includes two web applications to allow you to replace the functionality in the original IISADMPWD tool from Microsoft. For each application, go to the Admin page available at <http://<YourServerName>:xxxx/Admin> to configure application settings. The Admin page explains the purpose of each configuration setting.

## Helpful Videos

WebAD maintains a library of videos to help you configure and use IISADMPWD Replacement Tool. Access the videos at <http://webactivedirectory.com/products/iisadmpwd/videos> and find additional support at <http://support.webactivedirectory.com/>.

## Best Practices for Implementation

Ideally, you will set up the IISADMPWD Replacement Tool Check Password Status application as the front end to the web application you are protecting. This application checks Active Directory to see if a user's password needs to change. If the password needs changing, the user is redirected to the IISADMPWD Replacement Tool Change Password application. If no password change is required, the user will be passed through to the web application you are protecting and will be authenticated by that application.

## Securing the Admin Page

You can secure the Admin pages for both the IISADMPWD Replacement Tool web applications— Check Password Status and Change Password—using the Web.config file in each application's root directory.

# IISADMPWD Replacement Tool v1.1 Installation and Configuration Guide

---

1. Open Windows Explorer.
2. Go to the IISADMPWD Replacement Tool installation directory, typically <Program Files (x86)>\WebActiveDirectory\IISADMPWD\_ReplacementTool.
3. Access the Login directory to modify Check Password Status application security and use the ChangePassword directory for Change Password application security.
4. Open the Web.config file for each directory in a text editor. You might need to run your text editor as an administrator to save the settings.
5. Find the <location /> element as specified below.

```
<location path="Admin">
```

```
  <system.web>
```

```
    <authorization>
```

```
      <allow roles="Everyone" />
```

```
      <deny users="*" />
```

```
    </authorization>
```

```
  </system.web>
```

```
</location>
```

6. Modify the value of the roles attribute in the <allow /> element. Set this value to the DOMAIN\GroupName for the domain members you want to allow to access the Admin page. Separate multiple groups using a comma.
7. Save your changes.
8. Test the security to ensure that only authorized users can access the Admin page.